

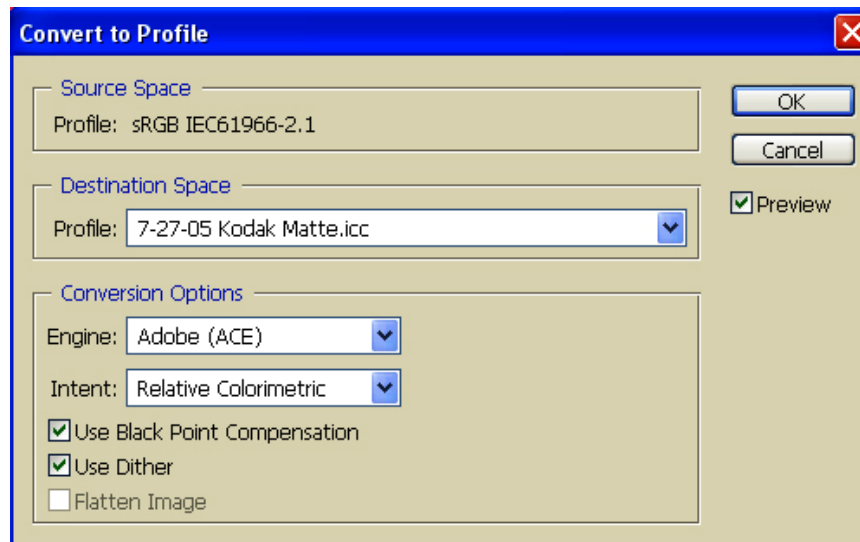
## A&I Direct To Print File Preparation Instructions

\*\*\* Note: For Direct to Print, client is responsible for ALL file prep \*\*\*

1. Size to desired output size and include any desired borders in file. Files must be pre-sized with or without borders.
2. Images larger than 50" must be rotated to horizontal
3. Set file to the following requirements:
  - File must be in RGB mode
  - File type: Uncompressed, 8-bit, TIFF, with layers flattened
4. You must convert to our Kodak Endura/Lightjet printer/paper Profile.  
*Converting to Profile must be your last step when prepping the file.* Editing after converting to our profile will result in a color shift. Profile available on <http://www.AandI.com/faq.html>
  - a. Open Photoshop
  - b. Open Image
  - c. Convert to profile
    - For Photoshop CS2: Go to Edit > Convert to Profile
    - For Photoshop CS or lower: Go to Image Menu > Mode > Convert to Profile
  - d. Select the A&I Profile and click "OK" (see screen shot below)
  - e. Select Engine: Adobe, and Intent: Relative Colorimetric and click "OK"

For PC, the file name is: 7-27-05Kodak.icm

For MAC, the file name is: 7-27-05Kodak.icc



**Note: Direct to Print Service does not include:  
Testing, Color Correction, Sizing, Re-dos, Adding Borders, Revisions, Spotting**